

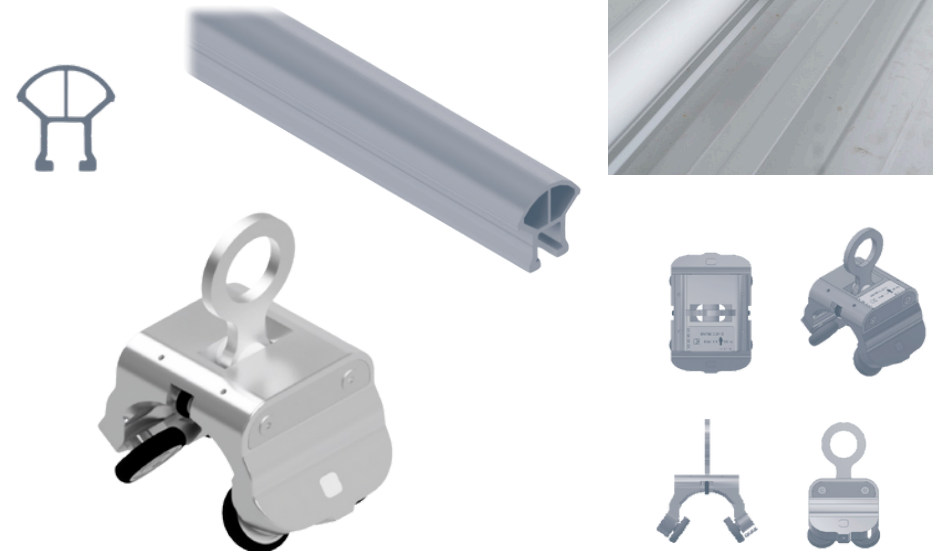
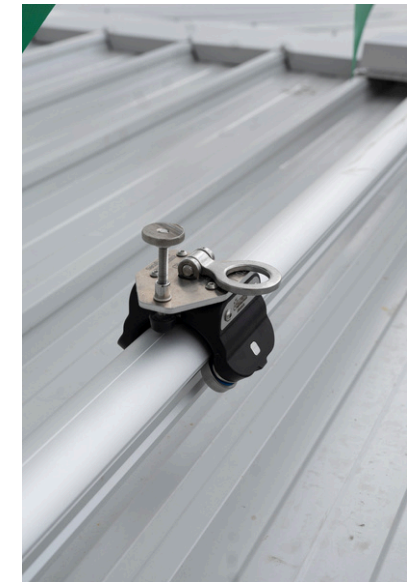


## Key Features

- **Certified Fall Arrest Performance:** Independently tested and certified for fall arrest. Lower deflection and deceleration forces reduce injury risk, especially in low-clearance environments.
- **Multi-Configuration Flexibility:** Mounts to floors, walls, ceilings, inclines, or overhead spaces, ideal for everything from façade maintenance to truck or machinery access.
- **Minimal Downtime After a Fall:** The rail remains intact after a fall – only the affected section needs replacement, returning your site to operation quickly.
- **Long Spans, Fewer Penetrations:** Engineered for up to 6-metre spans between brackets, reducing install time and structural disruption.
- **Low-Maintenance, Clean Design:** Anodised aluminium profile resists corrosion and debris, ensuring long-term performance

## Specifications

- **Load Rated:** Built to support 2.5kPa live loads with treads tested for up to 2.2kN/m.
- **Compliant Geometry:** Designed to AS 1657, with consistent risers, safe tread overlap, and appropriate landing clearances.
- **Slip Resistant:** R10-rated steps with yellow-highlighted nosing for visibility and safety.
- **Handrails:** Provided on one or both sides depending on width; minimum 30mm diameter.
- **Landing Requirements:** Minimum 2000mm head clearance and 600mm clear standing space.
- **Certified Build:** Manufactured in accredited facilities with compliant welds and traceable components.
- **Compliance Tagging:** Weather-resistant ID label with install details and inspection info.



# Our Certifications

At Workplace Defender, we are committed to delivering industry-leading height safety solutions that meet the highest standards of safety, quality, and compliance. Our certifications demonstrate our dedication to providing reliable and regulation-compliant products



## CodeMark Certification

Our certified products meet the National Construction Code (NCC) requirements, ensuring regulatory compliance for architects, builders, and developers.



## ISO 9001 - Quality Management

We maintain a certified quality management system to deliver consistent, high-quality products and services that meet customer and regulatory expectations.



AS/NZS 5532  
SMK40274

## AS/NZS 5532

Our anchor points comply with AS/NZS 5532, the Australian and New Zealand standard for the manufacturing, testing, and performance of height safety anchors.



## ISO 45001 Occupational Health & Safety

Our solutions align with global best practices in workplace safety, ensuring compliance with occupational health and safety management standards.



AS 1657  
SMK40193

## AS1657

Compliance with Australian Standard AS 1657 ensures our platforms, walkways, stairways, and ladders meet strict safety and design requirements.



## ISO 14001 - Environmental Management

We are committed to minimising environmental impact through an internationally recognised environmental management system.



## NATA Accreditation

We uphold rigorous testing and inspection standards under NATA accreditation, ensuring the safety and reliability of our height safety systems.



With these certifications, Workplace Defender ensures compliance, durability, and safety across all our solutions, helping businesses create safer working environments with confidence.

## WHY CHOOSE DEFENDER?

- Independently tested in a NATA™-accredited facility.
- Australian-made, built to withstand harsh environments.
- Cost-effective without compromising on safety or durability.
- Seamless integration with safety systems, including guardrails, platforms, and access hatches.

## CONTACT US

For reliable height safety solutions, call [1300 013 794](tel:1300013794) or visit [www.workplacedefender.com.au](http://www.workplacedefender.com.au)

