

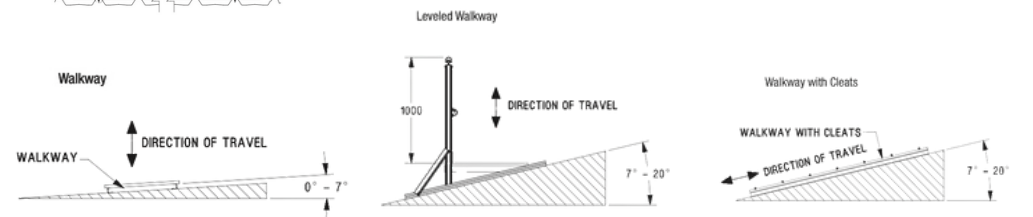
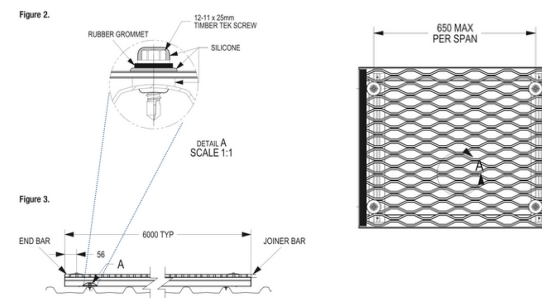
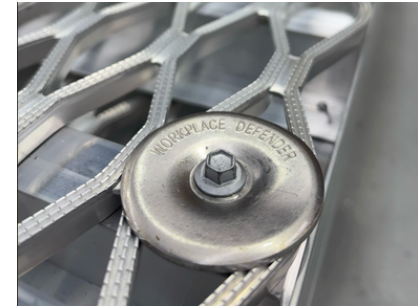


Key Features

- **Certified Safety:** Tested in a NATA™-accredited lab and independently certified to AS 1657, the National Construction Code, and OHS legislation.
- **Stable and Slip-Resistant:** Designed for a solid, bounce-free feel with a minimum R10 slip resistance rating.
- **Tailored for Your Site:** Custom configured to suit your building type, incline, and roof surface.
- **Low-Impact on Roof Integrity:** Engineered to reduce penetrations and maintain waterproofing with sealed fixings and careful load distribution.
- **Compliant Installation:** Installed by certified Defender™ Installers with AS/NZS 4801 accreditation and documented compliance for audit and safety control.
- **Durable and Corrosion-Resistant:** Built from non-corrosive aluminium with for long-term durability.
- **Versatile on Slopes:** Adaptable for inclines up to 20° with optional cleats and guardrails, and always compliant with AS 1657 slope hierarchy.

Specifications

- Slip Rating: R10 minimum, tested in wet conditions
- Slope Suitability:
 - 0-7°: Fixed flat on roof surface
 - 7-20°: Levelled with cleats and lower-side guardrails as required
- Loading: Designed to support 2.5kPa live load
- Toe Boards: Required where object drop exceeds 2m
- Fixings: Roof penetrations sealed with layered silicone (per Figure 2)
- Joins & Ends: End caps and joiner caps fitted to prevent trip hazards
- Material: 6063-T6 aluminium walkway with galvanised steel fixings
- Certifications: AS 1657, ISO 9001 (design), ISO 14001 (environmental), CodeMark™ and StandardsMark™
- Tagging: Supplied with compliance plates and documentation for ongoing management



Our Certifications

At Workplace Defender, we are committed to delivering industry-leading height safety solutions that meet the highest standards of safety, quality, and compliance. Our certifications demonstrate our dedication to providing reliable and regulation-compliant products



CodeMark Certification

Our certified products meet the National Construction Code (NCC) requirements, ensuring regulatory compliance for architects, builders, and developers.



ISO 9001 - Quality Management

We maintain a certified quality management system to deliver consistent, high-quality products and services that meet customer and regulatory expectations.



AS/NZS 5532
SMK40274

AS/NZS 5532

Our anchor points comply with AS/NZS 5532, the Australian and New Zealand standard for the manufacturing, testing, and performance of height safety anchors.



ISO 45001 Occupational Health & Safety

Our solutions align with global best practices in workplace safety, ensuring compliance with occupational health and safety management standards.



AS 1657
SMK40193

AS1657

Compliance with Australian Standard AS 1657 ensures our platforms, walkways, stairways, and ladders meet strict safety and design requirements.



ISO 14001 - Environmental Management

We are committed to minimising environmental impact through an internationally recognised environmental management system.



NATA Accreditation

We uphold rigorous testing and inspection standards under NATA accreditation, ensuring the safety and reliability of our height safety systems.



With these certifications, Workplace Defender ensures compliance, durability, and safety across all our solutions, helping businesses create safer working environments with confidence.

WHY CHOOSE DEFENDER?

- Independently tested in a NATA™-accredited facility.
- Australian-made, built to withstand harsh environments.
- Cost-effective without compromising on safety or durability.
- Seamless integration with safety systems, including guardrails, platforms, and access hatches.

CONTACT US

For reliable height safety solutions, call [1300 013 794](tel:1300013794) or visit www.workplacedefender.com.au

